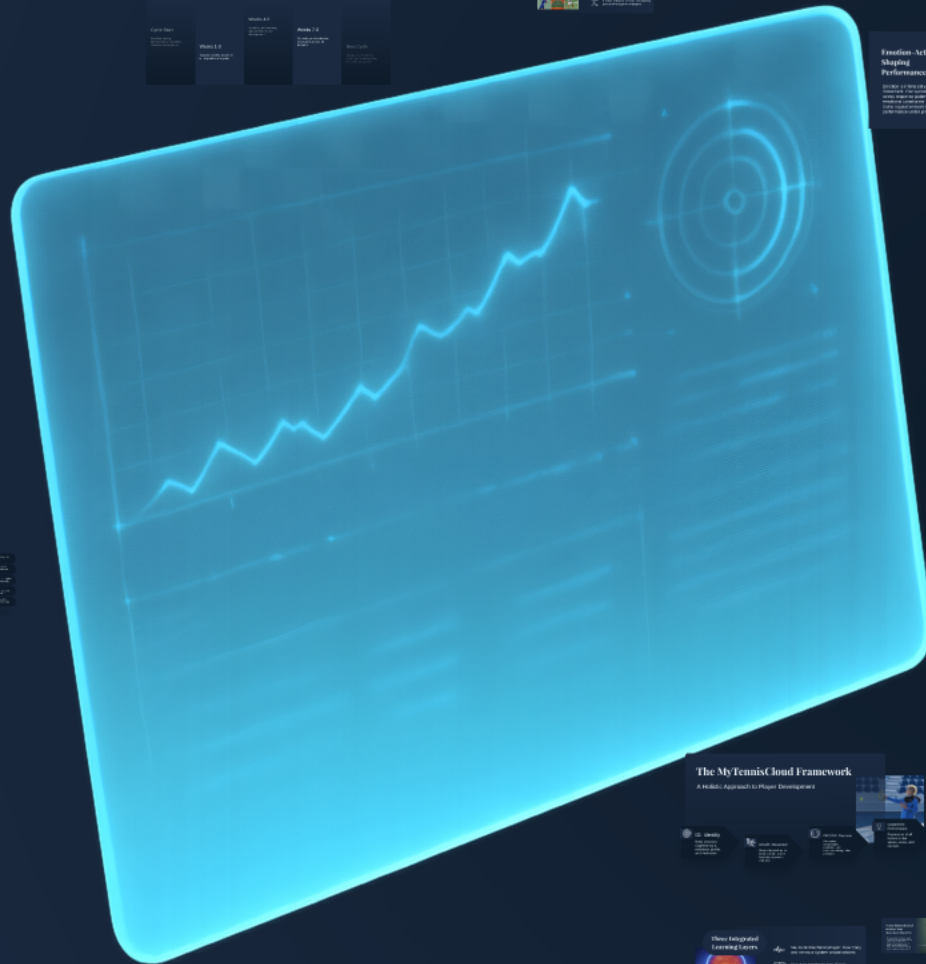




The MyTennisCloud Integrated Player System

Personalizing Performance Through Neuro-Biomechanical &
Cognitive Integration



Cognitive-Led Personalization

- Personalized training plans
- Real-time performance monitoring
- Adaptive learning algorithms

AI-Powered Physical Training

- Predictive analytics for injury prevention
- Customized recovery protocols
- Performance optimization

Dynamic Feedback System

Real-time analysis of player movements and techniques to provide immediate feedback and adjustments.

6-8 Week Evidence Cycles

Continuous improvement through data-driven insights and iterative learning.

Personalized Coaching

AI-driven coaching insights and recommendations tailored to individual player needs.

Emotion-Action: Shaping Performance

Understanding the psychological factors that influence performance and using them to optimize results.

Player Health & Wellness

- Injury prevention
- Recovery optimization
- Performance enhancement

The MyTennisCloud Framework

A holistic approach to player development, integrating cognitive, physical, and emotional factors.

Three Integrated Learning Layers

1. Cognitive: Understanding the mind's role in performance.
2. Physical: Optimizing the body's capabilities.
3. Emotional: Managing stress and maintaining focus.

The MyTennisCloud Vision

To revolutionize tennis training and player performance through personalized, data-driven insights.

Key Features

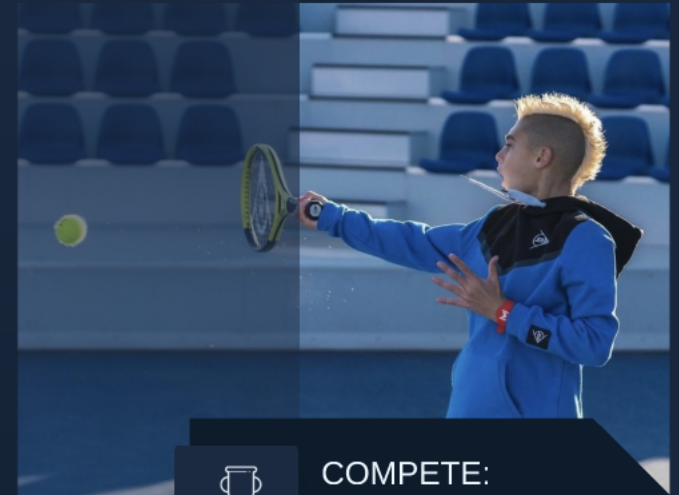
- Personalized training plans
- Real-time performance monitoring
- Adaptive learning algorithms

Why MyTennisCloud is the World's First System

- AI-powered personalization
- Dynamic feedback system
- Evidence-based training cycles
- Integrated cognitive, physical, and emotional layers

The MyTennisCloud Framework

A Holistic Approach to Player Development



ID: Identity

Body structure, cognitive style, emotional profile, and motivation.



MOVE: Movement

Neuro-biomechanics, kinetic chain, and 9 key body dynamic motions.



DECIDE: Decision

Perception, interpretation, prediction, and decision-making under pressure.



COMPETE: Performance

Expression of all factors under stress, score, and context.



ID: Identity

Body structure,
cognitive style,
emotional profile,
and motivation.



MOVE: Movement

Neuro-biomechanics,
kinetic chain, and 9
key body dynamic
motions.



DECIDE: Decision

Perception,
interpretation,
prediction, and
decision-making under
pressure.



COMPETE: Performance

Expression of all
factors under
stress, score, and
context.

Three Integrated Learning Layers



Neuro-biomechanical layer: How body and nervous system create strokes.



Cognitive-emotional layer: Player perception, processing, decision, and emotional regulation.



Motor learning layer: How the player truly learns and adapts.

Neuro-Biomechanical Identity: Your Movement Blueprint

We analyze body structure, muscle recruitment, and timing signatures to create a unique Movement Blueprint. This includes preferred stance, swing shapes, contact points, and serve rhythm, ensuring training is tailored to the individual.



The Kinetic Chain: 9 Dynamic Motions

- Ground Interaction & Lower Body Rotation for power generation.
- Pelvis-Trunk Separation & Trunk Rotation for elastic energy.
- Scapular Motion & Shoulder Rotation for racquet head speed.
- Elbow Extension/Flexion for lever length and timing.
- Forearm Pronation/Supination for spin and direction.
- Wrist Articulation for fine-tuning and feel.

Impact Point: The Tactical Anchor

The impact point defines where, when, and how body orientation, chain activation, and racquet path converge. Our system analyzes this critical moment to optimize time, space, and force for every stroke.



The Cognitive- Motor Loop



Perception: Visual, kinesthetic, and auditory cues.



Interpretation: Understanding ball properties and opponent intent.



Prediction: Anticipating ball location and opponent recovery.



Vibration (Feel): Racket-ball feedback and micro-adjustments.



Execution: Chosen movement and stroke expression.



Evaluation: Outcome vs intention feedback for future decisions.

Modern Motor Learning: Beyond Repetition



Differential Learning: Embracing variability for robust, adaptable patterns.



Spaced Learning: Revisiting key skills over time for improved retention.



Intensity & Efficiency: Optimizing physical, cognitive, and emotional load.



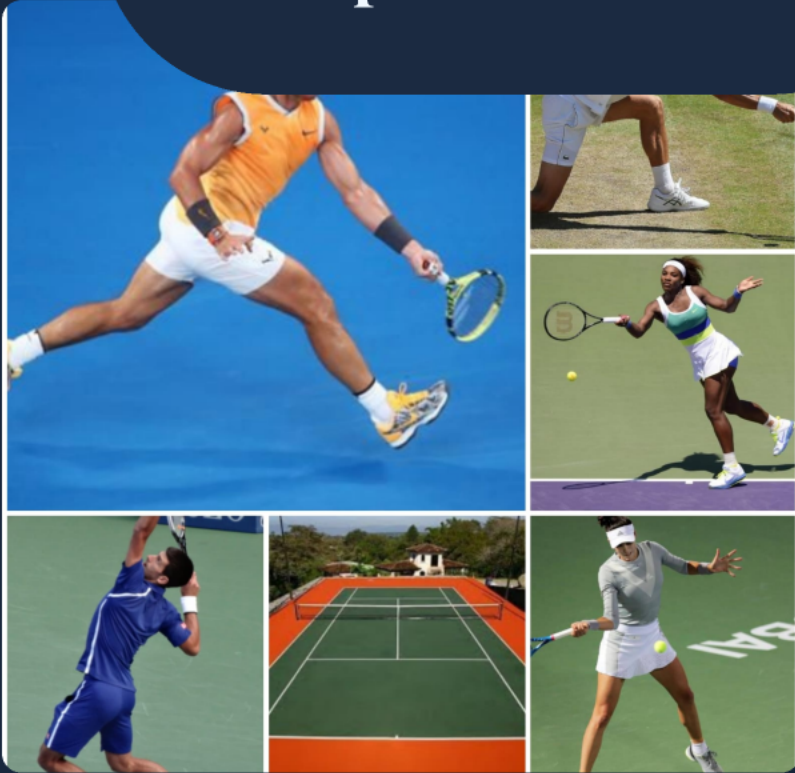
Intention & Evaluation: Clear learning goals and measurable outcomes.

Emotion-Action: Shaping Performance

Emotion is intrinsically linked to movement. Our system identifies stress response patterns, builds emotional constraints into drills, and trains regulation tools to optimize performance under pressure.



Crafting Your Competitive Identity



Deep Motivation: Understanding why and what success means.



Preferred Energy System: Matching training to individual endurance.



6 Styles of Play: Tailoring tactical choices to unique strengths.



6 Basic Patterns of Play: Developing personalized game strategies.

Dynamic Footwork System

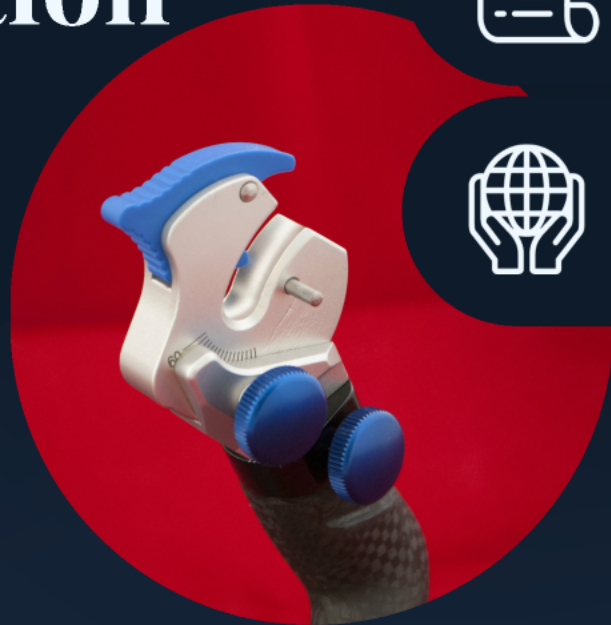
We build a footwork library tailored to court position, pattern of play, and individual body preferences. Each player gets primary and secondary patterns, ensuring adaptability and avoiding structural overload.



Aligned Physical Training

- Structure-aware: Mobility and stiffness tailored to individual needs.
- Energy system specific: Conditioning matched to playing style and demands.
- Mindset linked: Training adapted to player's psychological preferences.
- Comprehensive off-court programs: Neuro strength, power, conditioning, and recovery.

Constraints-Led Personalization



Adaptive explanations based on cognitive and learning preferences.



Manipulation of task constraints like targets, rules, and scoring.



Manipulation of environment constraints such as space, surface, and light.

6-8 Week Evidence Cycles

Continuous Improvement Through Data

Cycle Start

Baseline testing:
Biomechanics, cognition,
mindset, performance.

Weeks 1-3

Targeted training based on
initial profiles and goals.

Weeks 4-6

Variability and intensity
adjustments for skill
development.

Weeks 7-8

Re-testing and evaluation
of progress across all
domains.

Next Cycle

Adaptation of training
plans and re-blueprinting
for continued growth.

Cycle Start

Baseline testing:

Biomechanics, cognition,
mindset, performance.

Weeks 1-3

Targeted training based on initial profiles and goals.

Weeks 4-6

Variability and intensity
adjustments for skill
development.

Weeks 7-8

Re-testing and evaluation
of progress across all
domains.

Next Cycle

Adaptation of training plans and re-blueprinting for continued growth.

6-8 Week Evidence Cycles

Continuous Improvement Through Data

Cycle Start

Baseline testing:
Biomechanics, cognition,
mindset, performance.

Weeks 1-3

Targeted training based on
initial profiles and goals.

Weeks 4-6

Variability and intensity
adjustments for skill
development.

Weeks 7-8

Re-testing and evaluation
of progress across all
domains.

Next Cycle

Adaptation of training
plans and re-blueprinting
for continued growth.

MyTennisCloud: The Content Engine



Identity Module: Player profiling (body, cognitive, competitive).



Neuro Biomechanics Module: Kinetic chain, 9 motions, impact point.



Perception-Action Module: Drills for perception-execution, differential learning.



Emotion & Mindset Module: Stress response, regulation tools.



Patterns & Footwork Module: Styles of play, patterns, footwork systems.



Physical & Energy Systems Module: Profiling, training templates, recovery.

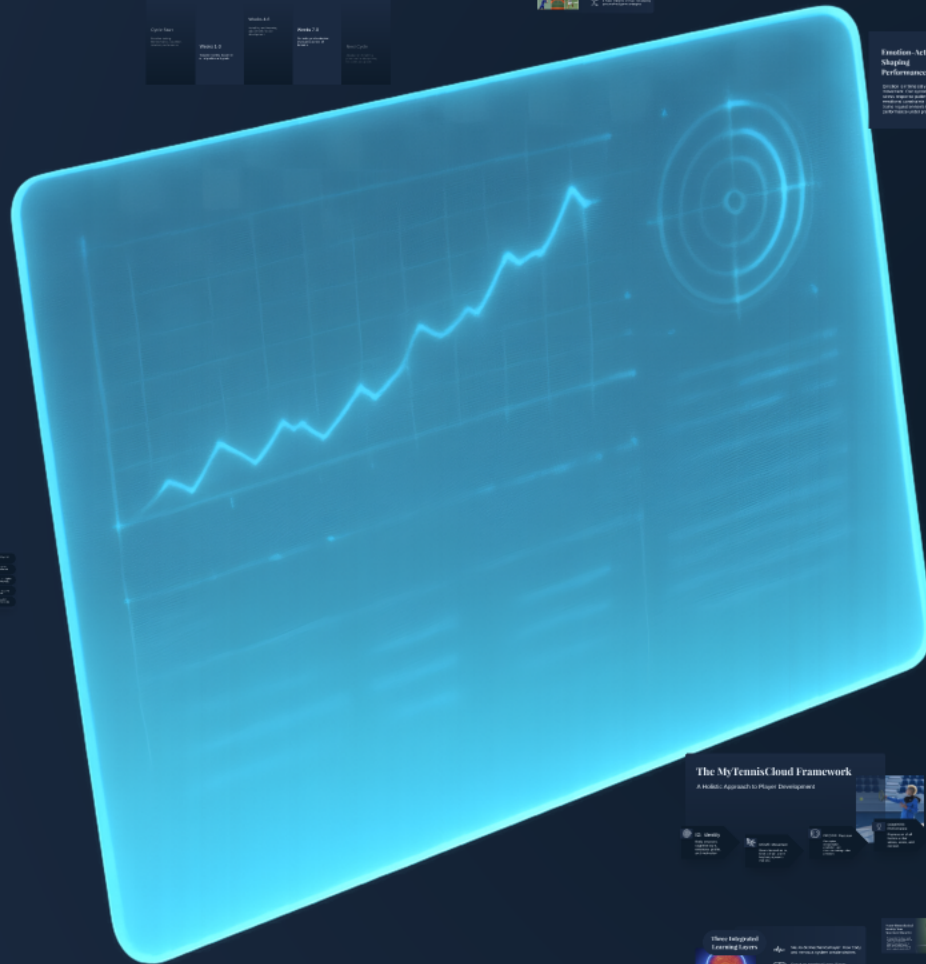
Why MyTennisCloud is the World's Best System

- ➔ Starts from individual identity, not generic models.
- ➔ Integrates neuro-biomechanics, cognition, emotion, and physiology into one coherent framework.
- ➔ Uses modern motor learning principles (differential, spaced, constraints-led).
- ➔ Fully operationalizable through MyTennisCloud: Drills, templates, tests, and programs are taggable and trackable.
- ➔ Produces measurable change every 6-8 weeks, moving beyond 'more hitting' to data-driven progress.



The MyTennisCloud Integrated Player System

Personalizing Performance Through Neuro-Biomechanical &
Cognitive Integration



Cognitive-Led Personalization

- Personalized training plans
- Real-time performance monitoring
- Adaptive learning algorithms

AI-Powered Physical Training

- Predictive analytics for injury prevention
- Customized recovery protocols
- Performance optimization

Dynamic Feedback System

Real-time analysis of player movements and techniques, providing instant feedback and adjustments.

6-8 Week Evidence Cycles

Continuous improvement through data-driven insights and iterative learning.

Personalized Coaching

AI-driven coaching insights and recommendations tailored to individual player needs.

Emotion-Action: Shaping Performance

Understanding the psychological factors that influence performance, from focus and motivation to stress management.

Player Health & Wellness

- Injury prevention and recovery
- Nutrition and hydration tracking
- Sleep and recovery optimization

Why MyTennisCloud is the World's Best System

- Personalized training plans
- Real-time performance monitoring
- Adaptive learning algorithms

Why MyTennisCloud is the World's Best System

- Personalized training plans
- Real-time performance monitoring
- Adaptive learning algorithms

The MyTennisCloud Framework

A holistic approach to player development, integrating physical, cognitive, and emotional factors.

Three Integrated Learning Layers

1. Cognitive: Understanding the game and oneself.
2. Physical: Mastering technique and fitness.
3. Emotional: Managing pressure and staying motivated.

The MyTennisCloud Vision

To revolutionize tennis training and performance through data-driven insights and personalized coaching.